



Versatile Print and Cut Function delivers amazing creative production capability from a single machine...

The multiple functions of the CJV300 models ensure high-quality printing and high-accuracy cutting enabling the production of labels, stickers and vehicle wraps with ease.

**Continuous-register mark-detection function enables continuous media cutting.**

The CJV300 automatically detects all register marks set by RasterLink6 on the media, and cuts contour lines precisely by utilising simultaneous automatic calibration.



**Print and cut on no-register mark media / Cut and print function**

Media up to 1m in length does not require register marks, reducing media wastage.

**Segment correction function facilitates precision cutting over longer-length prints.**

This function detects intermediate register marks and enables four-point corrections for each segment to ensure accurate contour cutting over longer-length prints, even if the image is distorted.

**Over-cut and corner-cut functions ensure clearly cut edges with no residues.**

The over-cut function ensures sharply cut edges with no residues by making a cross cut at the start and end positions of the contour cutting. The corner-cut function ensures sharply cut edges by making cross cuts at each corner.



**Clamp-pressure automatic-switching function enables continuous operation.**

The pressure of the media clamps is automatically optimised for printing and cutting. No pressure adjustment by the operator is required during continuous operation.

**"Cut and Print" function improves the workability of thin materials.**

This function prevents common problems, such as film separation and faulty cut results, by cutting the media before printing.

**Versatile cutting methods satisfy a range of market demands.**

"Half-cut" produces a series of half and die cuts, leaving a few connection points that retain the printed image on the medium. "Die cut" completely cuts the printed image from the medium. "Perforation cut" is useful for clipping images from the medium, used as crease lines.

**RasterLink6 Sophisticated RIP Software maximizes performance**

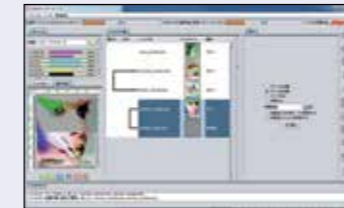
Intuitive and user-friendly operation



1. Easy to follow icons enable intuitive and user-friendly operation



2. Related settings feature in one window to simplify RIP operations with 'Register as Favourite' option available for regularly used layouts



3. Printing progress can be monitored on the main screen

**3-layer printing**  
Enables simultaneous 3-layer printing:  
e.g. Colour → White → Colour

**Web update function is supported:**  
This facility enables easy program updates and profile downloading to be performed via the internet.

**CJV300 Series**

**Specifications**

	CJV300-130	CJV300-160
Print head	On-demand piezo head (staggered dual-head)	
Resolution	360 dpi, 540 dpi, 720 dpi, 1,080dpi, 1,440 dpi	
Ink type	Solvent ink: SS21/BS3* Water-based sublimation ink: Sb53 (*BS3 ink is only available to non-EU countries)	
Ink colour	SS21: 10-colour (CMYK Lc Lm Lk Or W Si), BS3 (CMYK)	
Ink capacity	SS21:440ml cartridge/2L ink pack (W & Si: 220ml cartridge only) BS3: 600ml ink pack / 2L ink pack Sb53: 440ml cartridge/2L ink pack	
Max. printing width	Max.1,361mm	Max.1,610mm
Max. media width	Max.1,371mm	Max.1,620mm
Media thickness	1.0mm or less	
Roll weight	40kg or less	
Outside dimension	2,525mm(W) x 700mm(D) x 1,392mm(H)	2,775mm(W) x 700mm(D) x 1,392mm(H)
Body weight	167kg	178kg
Power supply	2x Single phase (AC100-120V/220-240V +/-10%) 50/60Hz±1Hz	
Power consumption	1,440Wx2 or less (100V) / 1,920Wx2 or less (200V)	
Applicable standards	VCCI class A / FCC class A / CE Marking (EMC, Low Voltage Machinery) / CB report / UL60950-1ETL / RoHS / REACH / CCC (pending) / Energy Star / RCM	
Operational environment	Temperature: 20-30 °C (68-86 °F) Humidity: 35-65% Rh (Non condensing)	

**Options**

Item	Item No.
Drying fan 160 / Drying fan 130	OPT-J0351 / OPT-J0352
Exhaust kit 160 / Exhaust kit 130	OPT-J0353 / OPT-J0354
AMF160 kit / AMF130 kit	OPT-J0359 / OPT-J0360
Static prevention sheet 300-160	OPT-J0355
Static prevention sheet 300-130	OPT-J0357
Jig-Head gap check	OPT-J0375
MBIS3 (Mimaki Bulk Ink System)	OPT-J0364
Eco case for 600 ml ink bag	OPT-J0361

**Supplies**

Item	Colour	Item No.	Remarks		
SS21	Cyan	SPC-0501C	440ml Ink cartridge		
	Magenta	SPC-0501M			
	Yellow	SPC-0501Y			
	Black	SPC-0501K			
	Light Cyan	SPC-0501LC			
	Light Magenta	SPC-0501LM			
	Orange	SPC-0501Or			
	Light Black	SPC-0501Lk			
	White	SPC-0504W-2		220ml Ink cartridge	
	Silver	SPC-0504Si		220ml Ink cartridge	
BS3	Cyan	SPC-0588C	2,000ml Ink pack		
	Magenta	SPC-0588M			
	Yellow	SPC-0588Y			
	Black	SPC-0588K			
	Light Cyan	SPC-0588LC			
	Light Magenta	SPC-0588LM			
	Orange	SPC-0588Or			
	Light Black	SPC-0588Lk			
	Cyan	SPC-0667C		600ml Ink pack	
	Magenta	SPC-0667M			
Yellow	SPC-0667Y				
Black	SPC-0667K				
Sb53	Cyan	SPC-0693C	2,000ml Ink pack		
	Magenta	SPC-0693M			
	Yellow	SPC-0693Y			
	Black	SPC-0693K			
	Sb53	Blue	SB53-BL-44	440ml Ink cartridge	
		Magenta	SB53-M-44		
		Yellow	SB53-Y-44		
		Black	SB53-K-44		
		Deep Black	SB53-DK-44		
		Light Blue	SB53-LBL-44		
		Light Magenta	SB53-LM-44		
		Blue	SB53-BL-2L		2,000ml Ink pack
		Magenta	SB53-M-2L		
		Yellow	SB53-Y-2L		
Black	SB53-K-2L				
Sb53	Deep Black	SB53-DK-2L	2,000ml Ink pack		
	Light Blue	SB53-LBL-2L			
	Light Magenta	SB53-LM-2L			
	Light Blue	SB53-LBL-2L			

\* Some of the samples in this folder are artificial renderings \* Specifications, design and dimensions stated in this folder may be subject to change without notice (for technical improvements, etc.)  
\* The corporate and merchandise names written on this folder are the trademark of the respective corporations \* Inkjet printers print using extreme fine dots, so colours may vary after replacement of the printing heads, also note that if using multiple printer units, colours could vary slightly from one unit to other unit due to slight individual differences \* Composer's errors reserved



High-speed, integrated printer/cutter...

**Mimaki**

www.mimakieurope.com info@mimakieurope.com @MimakiEurope

Mimaki Europe B.V. Stammerdijk 7E, 1112 AA Diemen, The Netherlands Tel: +31 (0)20 4627640

MEUCJV30001-E



SIGN & GRAPHICS

**Mimaki**

The world imagines... Mimaki delivers



the power to **create...**

**Mimaki**

## State-of-the-art integrated printer/cutter for creative applications

Mimaki's latest integrated printer/cutter delivers new levels of creativity with versatile and vibrant ink types, including new Silver, Orange and Light Black. CJV300 Series achieves the highest print speeds in its class, with innovative technologies ensuring unrivalled output quality for signmakers, display graphics professionals and printshops.

### CJV300 series delivers ...

- Fast printing speeds up to 105.9m<sup>2</sup> per hour
- High quality print resolution of up to 1,440dpi
- Two different printing widths: 1,361mm and 1,610mm
- Choice of multiple solvent ink sets, including:
  - 10-colour options (SS21) including; Silver, Orange, Light Black & White inks
- Nozzle Check Unit (NCU) and Nozzle Recovery System (NRS) ensure continuous print operations
- UISS and optional MBIS III on board 2 litre bulk ink system
- 3-way intelligent heater

**SOLVENT & DYE SUB INKS**  
**2 PRINT WIDTHS AVAILABLE**  
**1,440DPI MAX RESOLUTION**  
**MAPS3 PRINT ENHANCEMENT FUNCTION**  
**105.9m<sup>2</sup>/h MAX. SPEED**

**CJV300 Series**  
 CJV300-130/160



#### ENGINEERING EXCELLENCE AND CREATIVE INNOVATION

Founded in Japan in 1975, Mimaki Engineering has steadily grown by reputation and influence into a global company with large operational bases in Asia and the Pacific, United States and Europe.

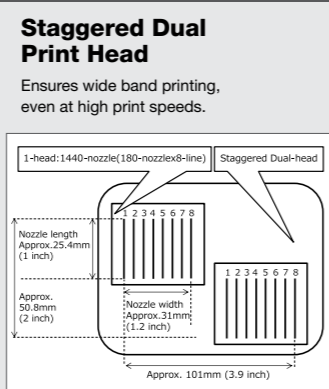
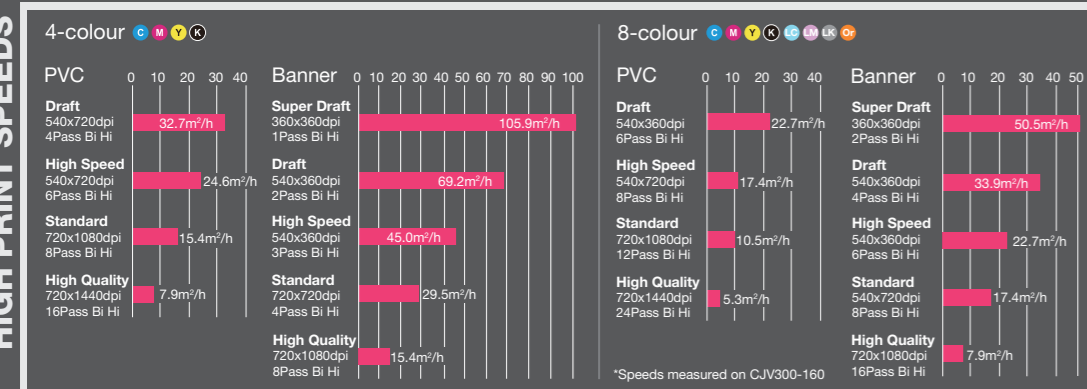
Renowned for award-winning performance, peerless build quality and innovative technology, Mimaki has established itself as a leading manufacturer of wide-format inkjet printers and cutting machines for the sign and graphics, textile and apparel and industrial markets. In addition, Mimaki also provides a comprehensive range of supporting products; hardware, software and associated consumable items, such as inks and cutting blades.

From outdoor signage and billboards to interior decoration and furnishing, from packaging and labels to promotional gifts and apparel, Mimaki is committed to developing technology that sets new industry standards, producing machines and products that turn the imagination of our customers into breath-taking reality.

... Mimaki delivers

**Create ...** Metallic stickers, Decals, Die-cut labels, Signage, Vehicle graphics, Banners, Posters, PoS, Backlit & Exhibition graphics, Garment marking, Canvas prints and much more...

#### KEY TECHNICAL FEATURES ...



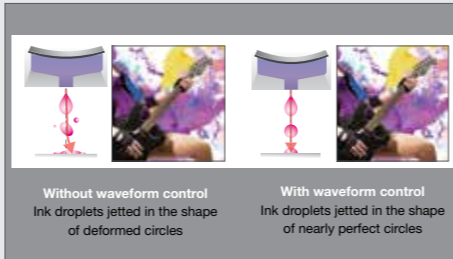
#### MAPS3 (Mimaki Advanced Pass System 3)

Reduces banding by dispersing ink drops between passes.



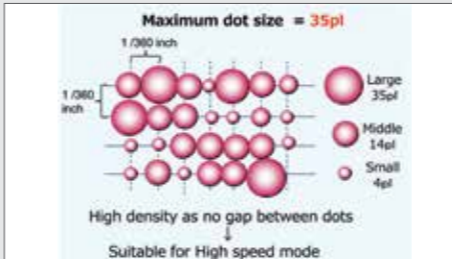
#### Waveform Control Technology

Ensures high quality print resolution, by jetting ink drops in straight lines with almost perfect round dots, delivering clear and sharp letters, lines and edges.



#### Large ink dot size in high speed mode

Delivers high density print by removing the gap between dots.



#### Silver Ink (For brilliant metallic effects)

Newly developed SS21 silver ink is available. Being 1.67\* times brighter than conventional silver inks, SS21 ink adds brilliant and beautiful mirror effects to print results.



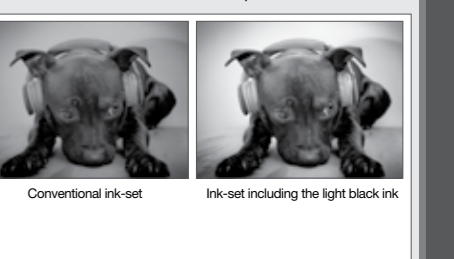
#### Orange Ink (Faithful colour reproduction)

By using the orange ink as a process colour, 94.8% of the PANTONE colour chart is covered with approximate colours. Thanks to a wider gamut with the orange ink, food freshness can be simulated, and corporate colours can be faithfully represented.



#### Light Black Ink (greater definition)

The light black ink improves the printed grayscale gradation. It also faithfully represents monochrome data without introducing unexpected colour shifts. Light black ink ensures a more accurate colour representation.



#### EASE OF USE

#### Productivity maintenance - NRS\*1

The NRS substitutes defective nozzles with non-defective nozzles until the technician arrives. This feature enables uninterrupted print operations and continuous productivity.

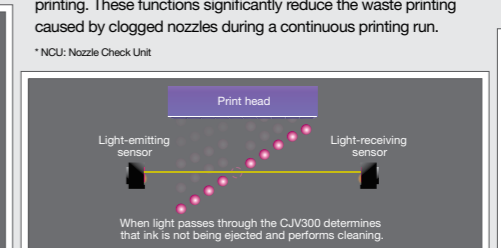
\*1 NRS: Nozzle Recovery System \*2 10 nozzles per nozzle row can be registered.



#### Prevention, print quality problems - NCU\*2

The CJV300 is equipped with Mimaki's original automatic NCU. Clogged nozzles are automatically detected and cleaned by the NCU. If the clogging is not resolved by cleaning, the CJV300 automatically sets the nozzle recovery function NRS and resumes printing. These functions significantly reduce the waste printing caused by clogged nozzles during a continuous printing run.

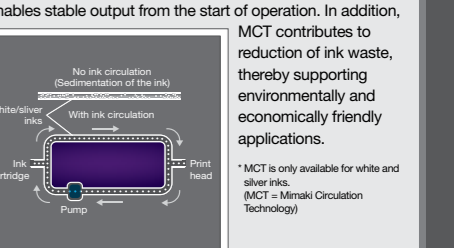
\*2 NCU: Nozzle Check Unit



#### Stable printing using the ink circulation system - MCT\*

MCT is a standard feature included to effectively avoid the settling of white and silver pigments in the ink lines by regularly circulating the ink. It prevents print troubles and enables stable output from the start of operation. In addition, MCT contributes to reduction of ink waste, thereby supporting environmentally and economically friendly applications.

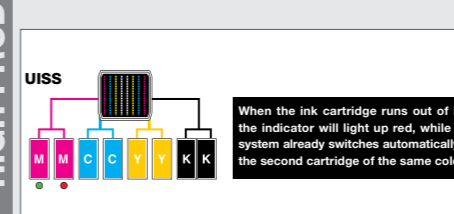
\*MCT is only available for white and silver inks. (MCT = Mimaki Circulation Technology)



#### HIGH PRODUCTIVITY

#### Uninterrupted Ink Supply System (UISS)

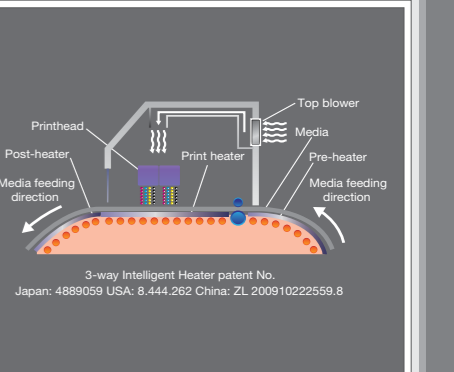
Utilises two cartridges per colour in 4-colour mode. When one cartridge runs out of ink the system switches automatically to the second cartridge of the same colour, enabling long unattended printing.



#### 3-Way intelligent heater

A 3-way intelligent heater fixes droplets placed on media. By using Mimaki's original technology in heating the media at a controlled temperature, ink can be fixed while maintaining high colour development and high image quality. Thus the CJV300 provides both steady colour development and easy handling after printing.

- Pre-heater: Heats media to the optimum temperature before printing.
- Print heater: Dries ink after it lands on media before it bleeds, improving colour development.
- Post-heater: Enhances ink drying and achieves stable take-up.
- Top blower: Air blower supports drying of ink.



#### BEAUTIFUL OUTPUT

#### CREATIVITY